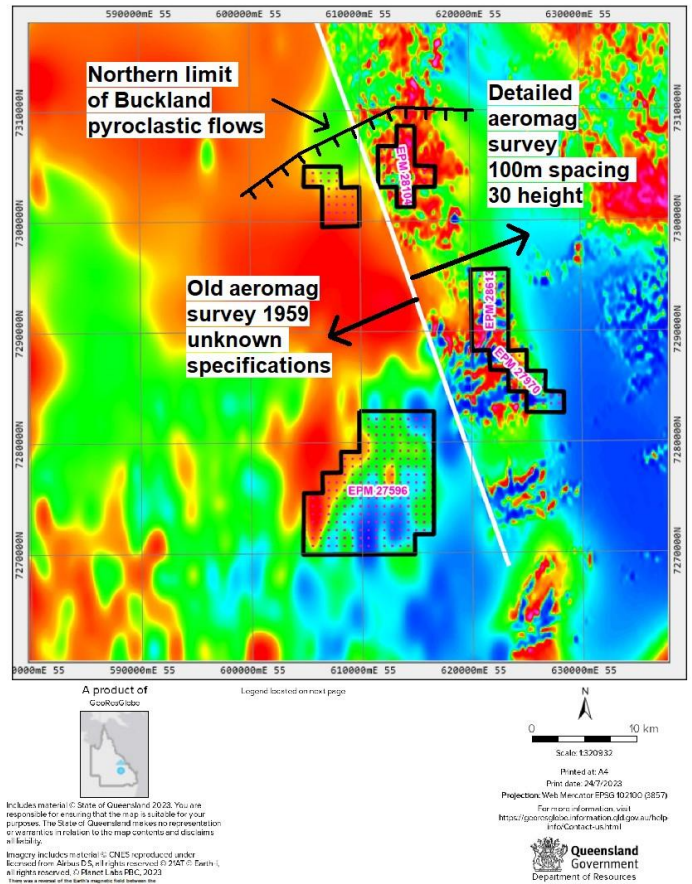
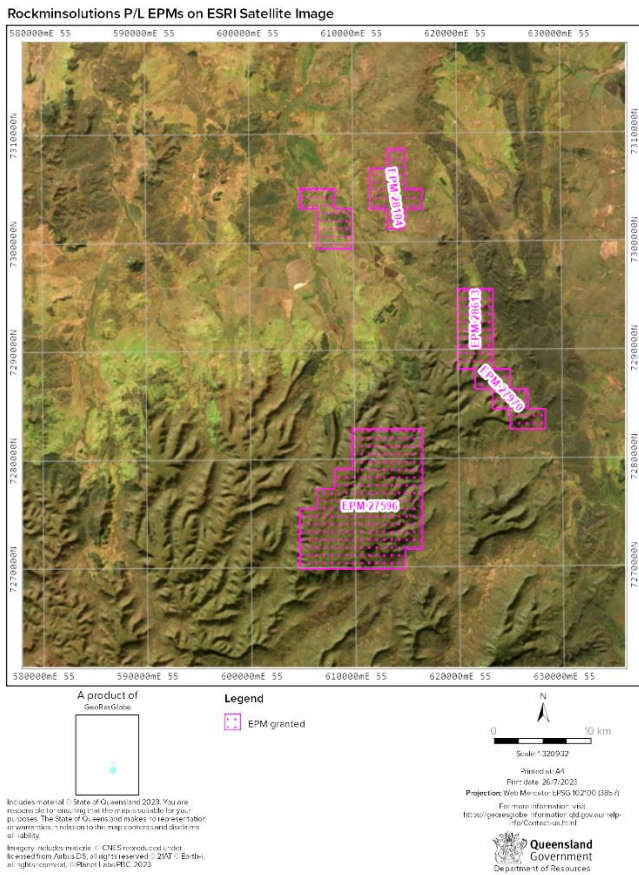


**Buckland Project RTP magnetic image**



There was a reversal of the Earth’s magnetic field between the two eruptions at Buckland 30Ma and 27Ma ago. The pyroclastic flows generated by these two events have opposite magnetic polarities, the older being normal (red on the RTP magnetic image) and the younger being reversed (blue on the RTP magnetic image). This makes it easy to map the distribution of these units on EPMs 27970 and 28613. Further north on EPM 28104 they are thinner with a weaker response.



Abundant Lithic Clasts Incorporated in the Base of the Younger Pyroclastic Flow at Buckland Approximately 45km from the Volcanic Centre